

KYGMCM

Home of the KSB Miniatures Collection
and Old Pogue Experience

Window to the past.

Bridge to the future.



KENTUCKY
GATEWAY
MUSEUM
CENTER

Messenger

VOLUME XXV

ISSUE VII

MAYSVILLE, KENTUCKY

FALL / OCTOBER 2020

There's so much to see at KYGMCM!

From the KSB Miniatures Collection and the Old Pogue Bourbon Experience, to our Research Library and changing exhibits, there's sure to be something for everyone.



THE VIEW FROM SECOND AND SUTTON

We had a great summer at the Museum Center and are excited for the new activities, programs and special events scheduled for the fall and winter months at Gateway! From exhibits in our *Galleries*, *Research Library*, *the Old Pogue Experience*, to the *KSB Miniatures Collection*; we are excited to present the fall and winter program of events in our historic location and in area schools and libraries. We hope you will make the Museum Center's exhibits a must visit this fall for your family and guests.

The Wormald Gallery features the beautiful **Maysville Stoneware Collection of Bill and Charlene Boggs** on display to November 7. To supplement this beautiful exhibit, the Museum is releasing a commemorative color catalog of all of the pieces in the collection. Published by the *Ledger-Independent*, this book is destined to become the foremost reference book on Maysville Stoneware. Copies are available in both the *Atrium* and *Still Room Gift Shops*. Proceeds from the sale of the reference catalog will benefit the *KYGMC Endowment Fund*.

The KSB Miniatures Collection continues with the *Four Seasons of Miniatures* exhibits in the *KSB Miniatures Gallery*. The Gallery is one of the largest collections of miniatures in the world available for public viewing. On every visit, we find new treasures telling the stories found in room boxes, houses and countless treasures from the hands of artists from around the world.

The Calvert Gallery features the ship collection of Ashley and Barbara Ford of Cincinnati, Ohio. ***The Age of the Ocean Liner, Steamships on the North Atlantic before the Triumph of the Jet*** will be on display until December 30. The exhibit features numerous nautical scenes and was curated by Marla Toncray our Exhibits Curator. The ships were a gift from Ashley and Barbara Ford and will become part of the permanent Museum Collection. Ashley Ford will be in the *Calvert Gallery* on September 22, October 6, October 20, November 3 and November 17 from 11:00 a.m. to 3:00 p.m., to discuss the collection and the history of the ocean liners.

The Education Services of the Museum Center will be in full swing during the month of October with special activities and programs celebrating our community reading program. **THE COMMUNITY READ** program is funded in part by grants from the *Scripps Foundation*, *International Paper*, and the *KYGMC Sustaining Fund*, along with additional support from our area schools and public libraries in Mason and Fleming Counties. *The Community Read Kick-Off Party* is set for Thursday October 8, starting at 6:30 p.m., in the parking area of the *Old Pogue Experience*. Music, refreshments and book signings will highlight some of the evening's activities. The 2020 book is ***The Book Woman of Troublesome Creek*** by Kim Michele Richardson. Books will be available at the Kick-Off Party. This year's activities promise to offer to our community one of the most exciting literacy events in our twelve years of sponsorship of the reading program.



November marks the opening of our holiday exhibits with the ***International Nativity Scenes*** opening the week of Thanksgiving on November 23. This traditional showcase of Nativity Scenes will be featured on both the first and second floors of the *Wormald Gallery* through the Christmas season.

As always, we thank you for your support, for being a member, and for building the legacy of the Kentucky Gateway Museum Center.

C.J. Hunter IV
Executive Director


meadowviewregional
your hospital
606-759-5311
989 Medical Park Drive
Maysville, KY 41056
meadowviewregional.com



Clarke and Clarke
Attorneys at Law

James L. Clarke J. Kirk Clarke Michael M. Clarke

Call us for an appointment (606) 564-5527
119 Sutton St., Maysville, KY 41056

<http://clarkeandclarkelaw.com/>

MINIATURE OF THE MONTH

By Kaye Browning

The Garage of *Megler Landing*

Megler Landing by Pat and Noel Thomas is a storied structure for many reasons. Built in 1981, the sizable Victorian dollhouse stayed in the home of the family who commissioned it for more than 40 years before making its way into the KSB Miniatures Collection.

The *Megler* name was inspired by a rocky cove nestled on the Washington side of the Columbia River where a ferry called the *Astoria-Megler* once ran between Astoria, Oregon, and Megler, Washington. It's the name etched into the dustily opaque garage window, however, that curious miniaturists find themselves questioning most.

As visitors marvel at *Megler* and its dozen or so rooms, their eyes always wander outside the deep green clapboard house and over to its freestanding garage. Matched perfectly with its verdant paint, brown trim and shingled roof, it sports a bit of individuality on the exterior walls with board-and-batten siding. The floor is comprised of thick, wide wooden planks, the kind that have survived the years by pulling apart and springing upward. Uneven, yet still sturdy. The clay brick driveway leading to the garage appears to have succumbed to the same elements, its once-flat surface now heaving in waves similar to those the *Astoria-Megler* may have once encountered.

Inside, you'll find items reminiscent of the lives lived in *Megler*: watering cans, flower pots, shovels and other gardening essentials; tires, tools, jumper cables and a snow shovel—the latter two quite helpful during those cold, rainy Northwest winters. The sink where grimy hands were washed after working on the family car shows remnants of iron stains lodged in its porcelain bowl along with dirt—the kind that in real life we know can never be totally removed. Above the sink is the name *Brody*. Written

in upper and lowercase letters, it was scrawled by a pudgy finger no doubt, while the boy perched himself on a stool of some sort or even the sink for that matter.



Envisioning the lives of *Megler's* imaginary residents is a pastime for many visitors to the KSB Miniatures Collection, but for the original owners, there's no speculation surrounding the child's signature. When they commissioned *Megler*, they knew there would be a four-year wait and during that time, their son Brody was born. The Thomases remember being pen pals with the family, watching the toddler grow as they themselves created a structure that would become part of the family for decades.

Other than the Thomases and the original owners' family, no one really knows who Brody is, which adds another lure of fascination to *Megler Landing*. What visitors do know, though, is that through the creativity, craftsmanship and the collection of miniatures, real life and that which lives in the imagination is portrayed palpably through the art form.



R. Fred Keith

Attorney at Law
Certified Public Accountant

KEITH & ASSOCIATES, PLLC

Direct: (859) 292-2468
Cell: (513) 259-6299
fkeith@keithlawyers.com

<http://keithlawyers.com/>

715 Bakewell Street
Covington, KY 41011-1227
Main Phone: (859) 261-6800
Fax Number: (859) 261-6882

KSB
Kathleen Savage Browning

MINIATURES COLLECTION

REAC
CRE

Real Estate Asset Counselling, Inc.

P.O. Box 27
Maysville, KY 41056-0027

Phone (606) 883-3602 Fax: (606) 883-3603

Email: tcoe@maysvilleky.net

James Thomas Coe, CRE

<http://www.postalrealestate.com/Home.html>

MARLA'S MUSINGS

By Marla Toncray

When I came to work at KYGMC in March 2018, I had only a small clue as to the daily workings of a museum. My standard joke with friends, co-workers and family is that we “don’t sit around all day among the antiquities, waiting on guests to come in.” Indeed, we are not. Each day brings about a different environment; from meeting an eclectic mix of guests to brainstorming on our next event or exhibit.

One example of what we’ve done recently is the newly published catalog featuring the Maysville Stoneware exhibit, which is currently on display in the Wormald Gallery until Nov. 7. The collection belongs to Bill and Charlene Boggs and consists of approximately 146 pieces of stoneware dating from the 1830s to late 1880s.

This 100-page catalog is a joint project between the museum and *The Ledger Independent*. There were many of us involved in the creation of the book, from Christy Hoots and Melody Evans at Champion Media to Brian McHugh, Braden May and Tim Douglas here at the museum, who assisted with the set-up of the exhibit and the measuring of each piece of stoneware. The final product is a true work of art, with photos of the exhibit and individual photos and measurements of each piece, all set against a background of cobalt blue, red, and white. The catalog is available at the gift shop.

Now as interesting as that catalog was to put together, I would by far prefer to be rummaging around in our collection room downstairs, looking through boxes to find some fantastic artifact that will enhance an exhibit and make people wonder: who wore the item; where they lived; what they did for a living, etc.

Take for example our latest exhibit: *The Age of the Ocean Liner*.

This wonderful collection of to-scale model ocean liners tells the story of North Atlantic crossings from 1840 to the modern-era.

To enhance the visual experience, myself and

Associate Director and Education Curator Tandy Nash came up with the idea of staging three vignettes: a deck chair scene; a stateroom; and a lounge.

To create these scenes, we searched our collection for items that would be found in each. These include clothing from 1900 forward; period appropriate furniture; books and magazines; crystal and china; linens; shoes; artwork; and even a deck of playing cards. Because of the generosity of our KYGMC members and others in the community, we have been able to produce all the items needed to help you step back in time and envision yourself on the Canberra, which was featured in the 1971 James Bond movie *Diamonds Are Forever*, or on board the unsinkable Titanic, which, as we all know, sank on April 14, 1912.



EDUCATION ESCAPADES

By Tandy Nash

The KYGMC Education Department has been working toward developing virtual lessons to be used by teachers, parents or educational groups who would like to use them to enhance their units of study. The lessons we provide can easily be adapted to different grade levels and used as part or whole instruction. Our community is a wealth of knowledge, and we utilize people from all fields to help in our endeavors such as cardiologist Eric Lohman, who has provided us with a video on the heart. Museum scout Maddie Stanfield has helped create the genealogical videos, and Grant Felice has been wonderful to share his expertise in the field of biology and science with us. Our virtual lesson plans include math, language arts, science, social studies, health and fine arts activities.

Teachers are encouraged to come film their own lessons at the museum or ask us to develop something for them. We will also be putting oral histories out there for use. What better way to get first hand knowledge about the history created around you!

Our education staff is still available to come to the classroom or facetime with your class. We can provide Museum Medley boxes to work in conjunction with the staff or to be used in the classroom by the teacher. And, we are always available for small group instruction here at the museum for field trips.

Our mission is to help educators, whether it be at home, in the school, church or any other institution that provides learning. With the Covid virus looming over us, it is a difficult time for teachers, parents and students. Everyone is doing his best to provide quality education for children. Everything is new and, as with all inquiry, we try, we fail and we readjust. We try again and through it all, we will succeed. KYGMC wants to help in the process.

IN OTHER NEWS...

Bored and looking for something to do during the Covid 19 limitations? Come to the KYGMC Research Library to look through an old scrapbook made by Lois Breeze Wright. Take a trip down memory lane or learn what it was like in Maysville during the war days. Newspaper articles on local boys gone to WWII era are plentiful. Also, many of the Ernie Pyles articles are included.

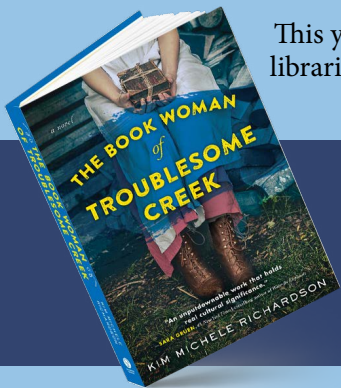
Hope to see you soon in the library,

Cay and Myra
Research Librarians



Two years ago (October 13, 2018) we opened the Bourbon History Galleries at The Old Pogue Experience in the Limestone Building. The Limestone Building has been the catalyst for exciting uses of the classroom spaces. Attendance at the Old Pogue Experience continues to grow even during these uncertain days as we deal with the various COVID-19 restrictions.

2020 KYGMC Read On Starts in October!



This year's book is *The Book Woman of Troublesome Creek*. We have books available at the Museum, local libraries (call for availability and hours), and several events planned during the month so bring the family out and celebrate reading!

Upcoming Read On Events

A full calendar of events will be available online and at the museum once Read On begins.

Saturday, October 3
7:30pm at the Russell Theatre
The Wizard of Oz

Thursday, October 8
7:00pm at KYGMC
Pie Party and Bluegrass Band



James B. Downing, CIC, CSRM
Vice President - Sales

125 Market Street
Maysville, KY 41056

www.crawfordins.com

Direct: (859) 292-7192
Mobile: (606) 584-0268
Office: (606) 564-6826
Fax: (859) 581-1008

Email:
jim.downing@assuredpartners.com



Compliments of John Sims, Jr.
70th Legislative District



john.sims@lrc.ky.gov

KYGMC STAFF

Executive Director
C.J. Hunter IV
director@kygmc.org

Miniatures Curator
Kaye Browning
browningminiatures@kygmc.org

Curator
Sue Ellen Grannis
curator@kygmc.org

Education Curator
Tandy Nash
education@kygmc.org

Finance Officer
Joyce Weigott
finance@kygmc.org

Exhibits Curator
Marla Toncray
exhibits@kygmc.org

Registrar
Sharon Art
registrar@kygmc.org

Reference Registrar
Anne Pollitt
anne@kygmc.org

Researcher
Cay Chamness
cay@kygmc.org

Researcher
Myra Hardy
myra@kygmc.org

Museum Services
Brian McHugh
museumservices@kygmc.org

Gift Shop Coordinator
Tracey Douglas
guestservices@kygmc.org

Advertising Director
Amanda Hankinson
amanda@junevbdesigns.com

Building Services
Liz Smith

Guest Relations
Haley May
Braden May
Timothy Douglas
Christy Hoots
Carson Rolph

TRUSTEES

Tom Coe
President

Joe McKay
Vice President

Gerry Schumacher
Secretary

Fred Keith
Treasurer

Chris Bauer
Trustee

Kaye Browning
Trustee

Dan Fannin
Trustee

Elisabeth Miller
Trustee

C.J. Hunter IV
Ex-Officio Trustee

Louis Browning
Trustee Emeritus

Bill Whitaker
Trustee Emeritus

Wanda Felice
Trustee Emeritus

Kentucky Gateway Museum Center
215 Sutton St.
Maysville, KY 41056

NON-PROFIT
ORGANIZATION
PERMIT NO. 12

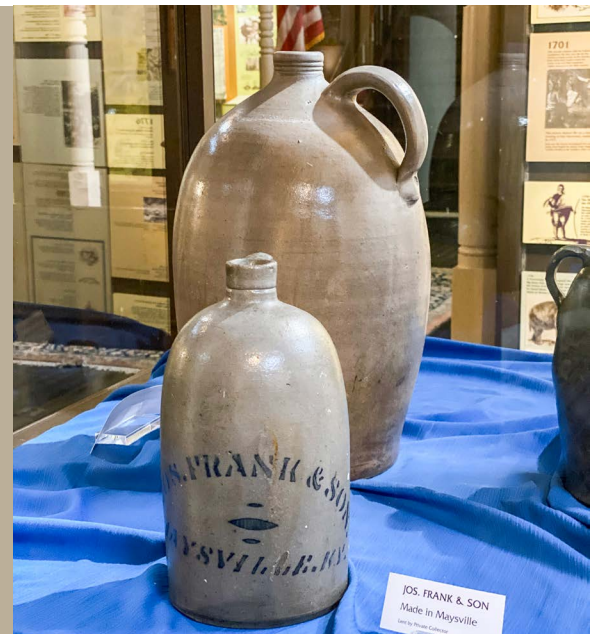
To:

or current resident.

MAYSVILLE STONEWARE

ON EXHIBIT THROUGH
NOVEMBER 7

MAYSVILLE STONEWARE
CATALOG NOW
AVAILABLE IN THE
ATRIUM GIFT SHOP



PLEASE NOTE

IN AN EFFORT TO KEEP OUR STAFF AND
VISITORS SAFE AND HEALTHY, MASKS ARE
REQUIRED WHILE VISITING THE MUSEUM

KYGMC HOURS

Sun. & Mon.
Tues. – Sat.

CLOSED
10:00am – 3:30pm



215 Sutton St., Maysville, KY 41056
606-564-5865 www.kygmc.org